

Σύντομη οδηγία για την τροποποίηση της λίστας ονομάτων T-OS

www.e-anagnostou.gr

1. Connect the '2-wire adapter' into the system, USB to PC, BUS port to BUS port(can be connected to any BUS port in the system).

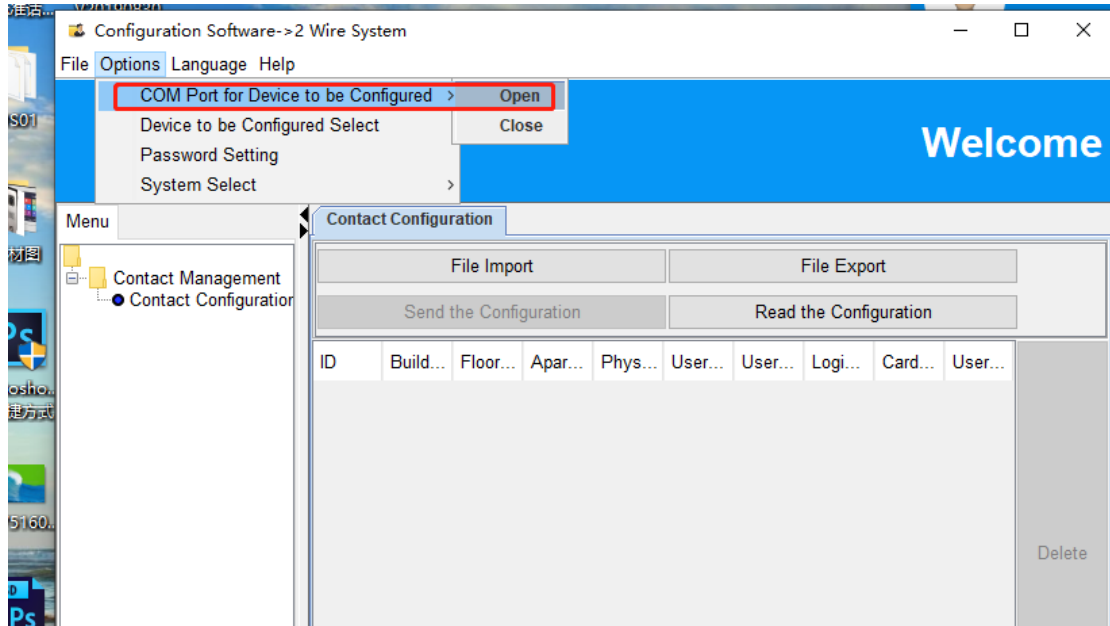


Set the dialer 1 from the back of the OS, 1 on 2 off , then power up the device.

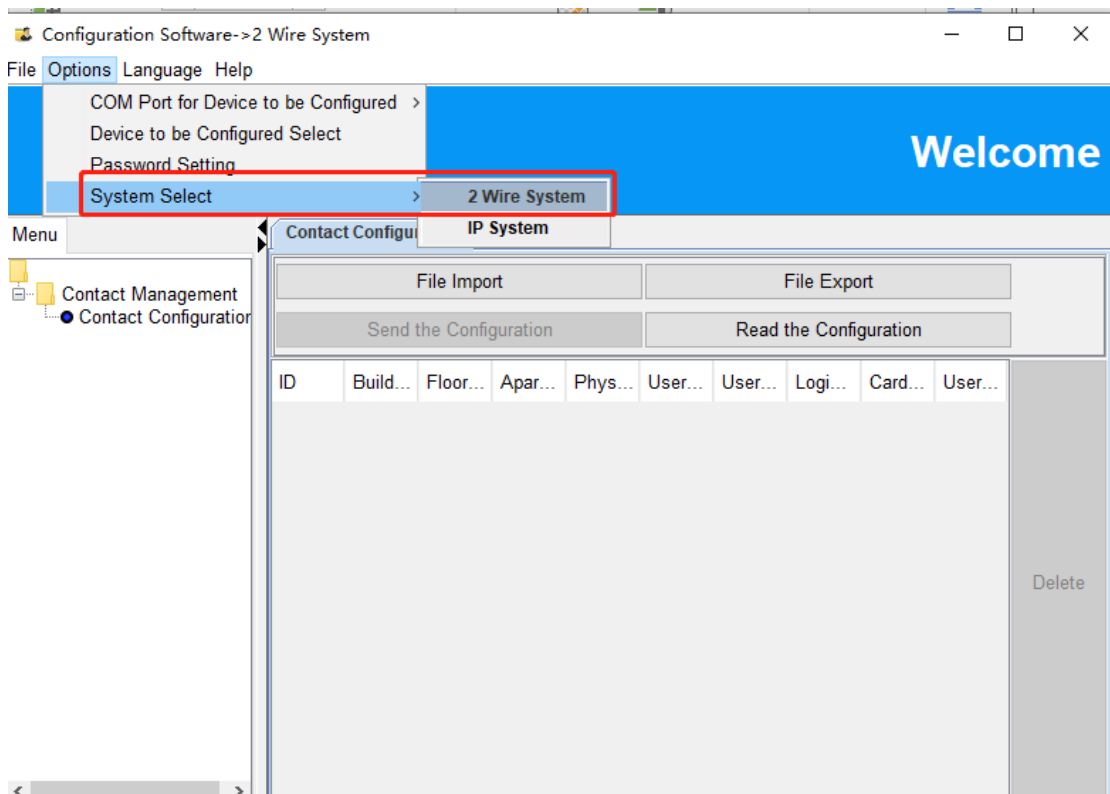


2. Open the software GVS PC ,

First open the COM port and connect device.



Then choose **2 wire system**. (or IP system)



click 'File export', then you will get an excel file with information as below:

Welcome->2 Wire System									
ID	Building No.	Floor No.	Apartment No.	Physical	User Name 1(*)	User Name 2	Logic Address	Card No.(*)	User Password(*)
0001				00001	סודרין			2602638, 8789486, 82282 98, 8797813, 265460, 383 5191, 8226682, 8688399, 8 177506, 8167649, 823997 1, 2608217, 2617378, 2615 449, 2602156, 8883932, 81 76486, 2594129, 2584442, 8801055, 8194338, 26096 88, 8242989, 2665498, 823 7459, 8241993, 8671226, 8 688410, 8169984, 264236 0, 8781617, 2655233, 2647 472, 2658468, 2600167, 26 61625, 2659104, 2610152, 2585003, 2639621, 26554 64, 8241611, 2634146, 878 3157, 8695014, 2606252, 8 885910, 8719183, 261787 8, 2612415, 2648469, 2629 930, 8182823, 2650142, 86 88776, 2607458, 2608411, 2612348, 8189899, 82395 94, 8726893, 8198694, 260 6154, 2618256, 2599215, 8 163077, 8723443, 818326 8, 8727148, 8708560, 8701 256, 8227942, 8169226, 81 71288, 8167091, 8194975, 2626169, 8727633, 87163 87, 2641599, 2608041, 820 998, 2632285, 8164426, 2 653070, 8222047, 264023	
0002				00002	סודר				123456
0003				00003	גבע				123457
0004				00004	סל				123458
0005				00005	שיריב				123459
0006				00006	ה				123460
0007				00007	איינשטיין/רמלה				123461

Remark: You need to input a random User password for each ID when you input the registered cards , just show as the picture, and all cards could type in one user.

3. You can change the user name, or physical address that refers to actual apartment(room no.) with this file.

4. After the modification is done, save the file and import it to the OS by clicking 'File import' and 'Send the configuration'.